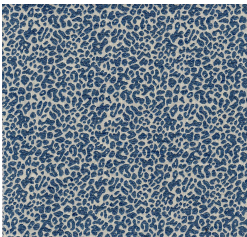


Product Collection : Cambridge VII  
 Contents: 34% Cotton, 66% Polyester  
 Width: 54"  
 Repeat: V-7.00", H-7.00"  
 Shown Railroaded: No  
 Pattern: Animal Skin  
 Recommended Finish: Duraseal & Latex  
 Prebacked: No  
 Cleaning: S (Solvent)  
 Color Family : Blue  
 Usage: Multipurpose  
 Abrasion: 50,000 Wyzenbeek  
 Pilling : 4  
 Seam Slippage : Pass  
 Flammability: CAL TB117, NFPA 260, UFAC Class 1, FMVSS302  
 Country of Origin: India

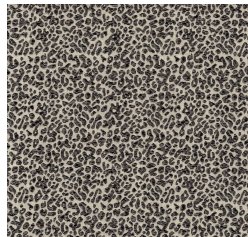
CONGO-IRIS



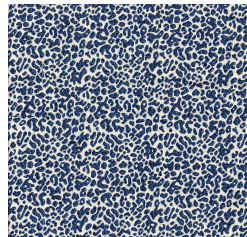
CONGO-CADET



CONGO-CORAL



CONGO-CHARCOAL



CONGO-DENIM



CONGO-FOG



CONGO-FERN



CONGO-GOLD



CONGO-NATURAL