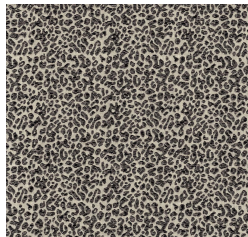


Product Collection : Cambridge VII
 Contents: 34% Cotton, 66% Polyester
 Width: 54"
 Repeat: V-7.00", H-7.00"
 Shown Railroaded: No
 Pattern: Animal Skin
 Recommended Finish: Duraseal & Latex
 Prebacked: No
 Cleaning: S (Solvent)
 Color Family : Blue
 Usage: Multipurpose
 Abrasion: 50,000 Wyzenbeek
 Pilling : 4
 Seam Slippage : Pass
 Flammability: CAL TB117, NFPA 260, UFAC Class 1, FMVSS302
 Country of Origin: India

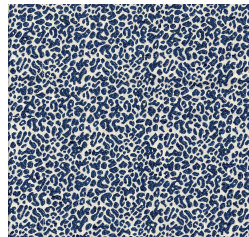
CONGO-CADET



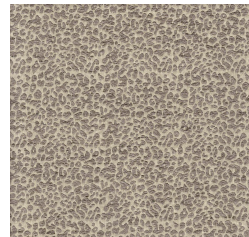
CONGO-CORAL



CONGO-CHARCOAL



CONGO-DENIM



CONGO-FOG



CONGO-FERN



CONGO-GOLD



CONGO-IRIS



CONGO-NATURAL