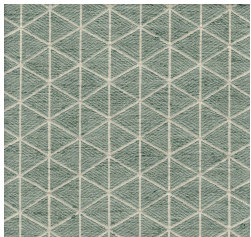
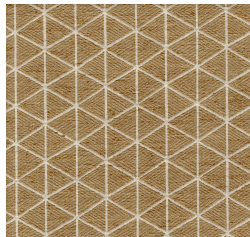


Product Collection : Cambridge VII
 Contents: 34% Cotton, 66% Polyester
 Width: 54"
 Repeat: V-1.75", H-2.75"
 Shown Railroaded: No
 Pattern: Geometric
 Recommended Finish: Duraseal & Latex
 Prebacked: No
 Cleaning: S (Solvent)
 Color Family : Gray
 Usage: Multipurpose
 Abrasion: 50,000 Wyzenbeek
 Pilling : 4
 Seam Slippage : Pass
 Flammability: CAL TB117, NFPA 260, UFAC Class 1, FMVSS302
 Country of Origin: India

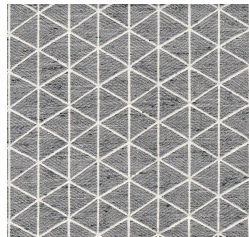
VOGUE-STONE



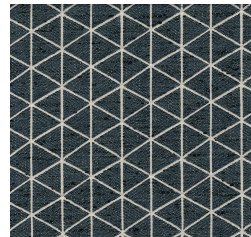
VOGUE-AQUA



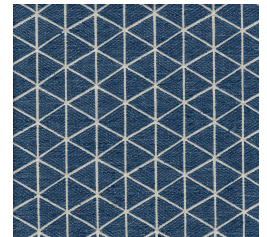
VOGUE-NATURAL



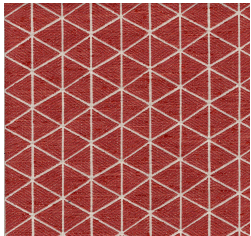
VOGUE-SLATE



VOGUE-DENIM



VOGUE-CADET



VOGUE-CORAL



VOGUE-ECRU



VOGUE-PARCHMENT



VOGUE-SMOKE