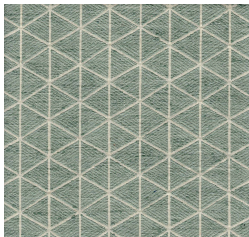


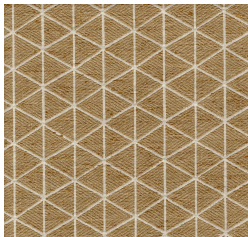


Product Collection : Cambridge VII  
 Contents: 34% Cotton, 66% Polyester  
 Width: 54"  
 Repeat: V-1.75", H-2.75"  
 Shown Railroaded: No  
 Pattern: Geometric  
 Recommended Finish: Duraseal & Latex  
 Prebacked: No  
 Cleaning: S (Solvent)  
 Color Family : Neutral  
 Usage: Multipurpose  
 Abrasion: 50,000 Wyzenbeek  
 Pilling : 4  
 Seam Slippage : Pass  
 Flammability: CAL TB117, NFPA 260, UFAC Class 1, FMVSS302  
 Country of Origin: India

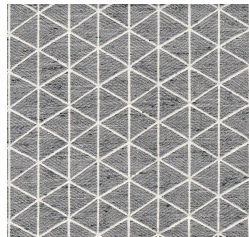
VOGUE-ECRU



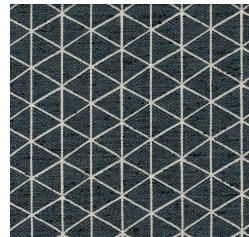
VOGUE-AQUA



VOGUE-NATURAL



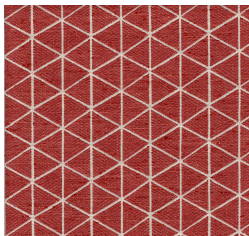
VOGUE-SLATE



VOGUE-DENIM



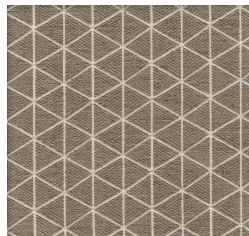
VOGUE-CADET



VOGUE-CORAL



VOGUE-PARCHMENT



VOGUE-STONE



VOGUE-SMOKE