

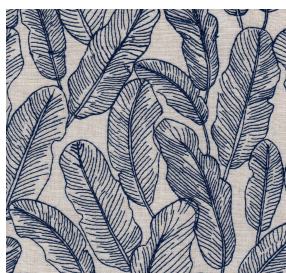


Silk Crafts Inc.

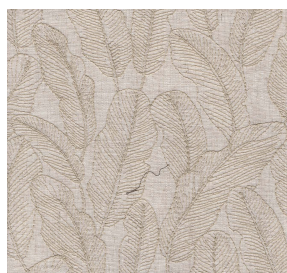


Product Collection : 2020 Fall
 Contents: 92% Polyester, 8% Linen
 Width: 51"/52"
 Repeat: V-15.25", H-17.25"
 Shown Railroaded: No
 Pattern: Botanical/Floral
 Recommended Finish: Duraseal & Latex
 Prebacked: No
 Cleaning: S (Solvent)
 Color Family : Green
 Usage: Multipurpose, Drapery
 Abrasion: 50,000 Wyzenbeek
 Pilling : 3.5
 Seam Slippage : Pass
 Flammability: CAL TB117, NFPA 260, UFAC Class 1
 Country of Origin: India

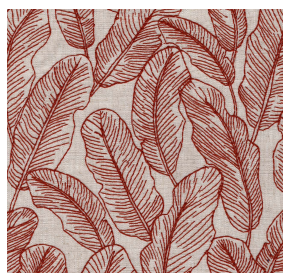
FLORENTINE-FERN



FLORENTINE-DENIM



FLORENTINE-IVORY



FLORENTINE-RUST



FLORENTINE-SLATE