



Silk Crafts Inc.

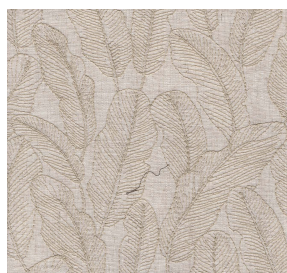


Product Collection : 2020 Fall  
 Contents: 92% Polyester, 8% Linen  
 Width: 51"/52"  
 Repeat: V-15.25", H-17.25"  
 Shown Railroaded: No  
 Pattern: Botanical/Floral  
 Recommended Finish: Duraseal & Latex  
 Prebacked: No  
 Cleaning: S (Solvent)  
 Color Family : Blue  
 Usage: Multipurpose, Drapery  
 Abrasion: 50,000 Wyzenbeek  
 Pilling : 3.5  
 Seam Slippage : Pass  
 Flammability: CAL TB117, NFPA 260, UFAC Class 1  
 Country of Origin: India

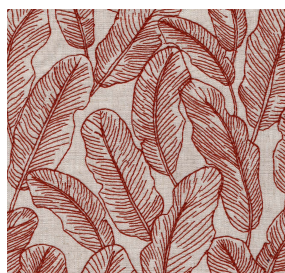
FLORENTINE-DENIM



FLORENTINE-FERN



FLORENTINE-IVORY



FLORENTINE-RUST



FLORENTINE-SLATE