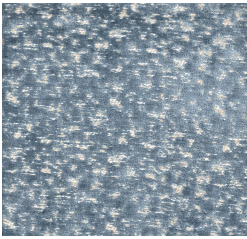
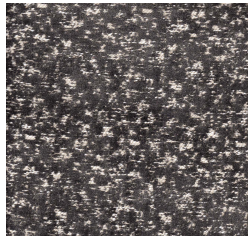


Product Collection : Velvet Jacquards
 Contents: 31% Polyester, 48% Viscose, 21% Cotton
 Width: 54"
 Repeat: V-10.25", H-13.50"
 Shown Railroaded: No
 Pattern: Abstract
 Recommended Finish: Duraseal & Latex
 Prebacked: No
 Cleaning: S (Solvent)
 Color Family : Red
 Usage: Multipurpose
 Abrasion: 100,000 Wyzenbeek
 Pilling : 4
 Seam Slippage : Pass
 Flammability: CAL TB117, NFPA 260, UFAC Class 1
 Country of Origin: India

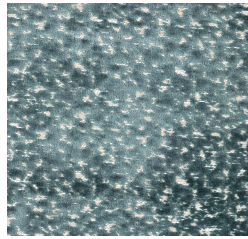
BEAUTE-RUBY



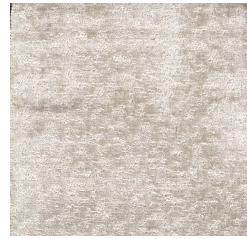
BEAUTE-CADET



BEAUTE-CHARCOAL



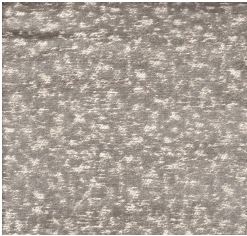
BEAUTE-IRIS



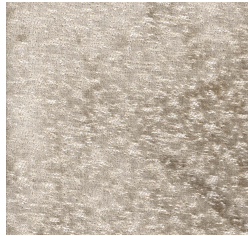
BEAUTE-PEARL



BEAUTE-SAND



BEAUTE-SLATE



BEAUTE-SMOKE